



SOLVING BEAM MOVER

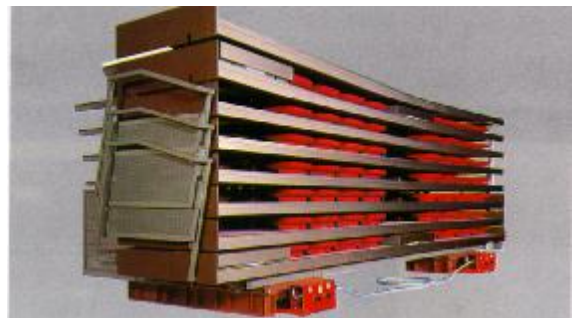


Operation

The perfect solution for moving machines, vehicles, steel fabrications and heavy components in factories and workshops.

- § flexible movement in every direction regardless of weight
- § light and precise positioning
- § easy handling
- § no floor wear
- § the same beam system can be used for several different loads

The air bearing elements lift the load from the floor and movement can then take place either manually or with the aid of drive units.



Creating Movement

Construction

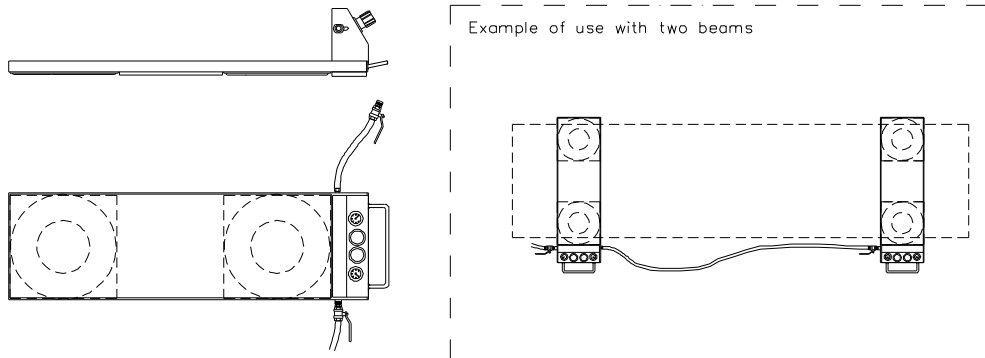
Solving beams are usually used in pairs. Each beam consists of a rigid steel construction equipped with two air bearing elements and a quick-release coupling for the air supply.

The supply hose is equipped with a shut off valve to turn the air on and off. An inter-connecting hose is included to connect between the beams, length as required.

Each beam is equipped with a simple flow regulator.

Technical information

SOLVING BEAM MOVER



TECHNICAL INFORMATION						
Type	Capacity kg	Air bearing element	Size (1) / beam LxWxH mm	Weight kg	Air supply mm DN	Air consumption NI/min (2)
SP 7	7000	SE 12-1,8	1000x300x55	25	15	1200
SP 10	10000	SE 15-2,5	1200x380x60	30	15	2200
SP 14	14000	SE 21S-3,5	1600x540x70	60	20	3000
SP 24	24000	ME 27S-6,0	2100x690x80	80	25	3400
SP 44	44000	ME 36S-11	2600x920x80	100	25	4000

1) The length L can be specified as required

2) Approximate values (total for 2 beams)

Other dimensions and modifications, such as extra height or multiple bearings, are available upon request.



Creating Movement

Ab Solving Oy
PO Box 98
FI-68601 Jakobstad
FINLAND
Tel +358 6 781 7500
Fax +358 6 781 7510
info@solving.fi
www.solving.fi

Korea Agent
Sameee Corporation
Tel +82 31 492 1691
Fax +82 31 492 1690
avnc@avnc.co.kr
www.avnc.co.kr